



USC Edward R. Roybal Institute on Aging

**Interdisciplinary Aging Research to Address Health
Disparities in Alzheimer's Disease and Related Dementias:
A Scientific Training Program**

OCTOBER 24 & OCTOBER 25, 2019

USC Tower

USC Suzanne Dworak-Peck School of Social Work
1150 S. Olive Street, Suite 1103
Los Angeles, CA 90015




BLANK PAGE



Interdisciplinary Aging Research to Address Health Disparities in Alzheimer's Disease and Related Dementias: A Scientific Training Program

Thursday, October 24, 2019

- 8:00 – 8:30 a.m. Breakfast/Registration
- 8:30 – 8:35 a.m. Opening Remarks & Introductions
María P. Aranda, PhD, University of Southern California
- 8:35 – 9:00 a.m. Using an NIA Health Disparities Framework to Stimulate Innovation in AD Research for Underrepresented Groups
Carl V. Hill, PhD, Alzheimer's Association
10 min. Q&A
- 9:00 – 9:30 a.m. KEYNOTE ADDRESS: Risk, Heterogeneity, & Mechanisms of Racial/Ethnic Disparities in Cognitive Aging and ADRD
Jennifer J. Manly, PhD, Columbia University
10. min. Q&A
- 9:30 – 9:50 a.m. Why this matters?
Aziza Lucas-Wright, Family Member
10 min. Q&A
- 9:50 – 10:50 a.m. PLENARY 1: NEW DEVELOPMENTS IN ADRD RESEARCH AND RECRUITMENT
- 9:50 a.m. ADRD Research
Helena C. Chui, MD, Keck School of Medicine of USC
10. min. Q&A
- 10:20 a.m. ADC Research Retention Survey Findings
Joshua D. Grill, PhD, University of California, Irvine
10. min. Q&A
- 10:50 – 11:05 a.m. Break
- 11:05 – 11:35 a.m. Promoting Interdisciplinary Collaborations Based on Team Science in Minority Aging Research
Christophe Marchand, PhD, National Cancer Institute
10. min. Q&A
- 11:35 a.m. – 12:15 p.m. PLENARY 2: LEVERAGING EXISTING FEDERAL DATA SOURCES TO ADDRESS ADRD HEALTH DISPARITIES
Eileen M. Crimmins, PhD, University of Southern California
Julie M. Zissimopoulos, PhD, University of Southern California
10. min. Q&A
- 12:15 – 12:25 p.m. Morning Session Evaluation
- 12: 25 – 1:25 p.m. Networking - Alzheimer's Association Catered Lunch



Interdisciplinary Aging Research to Address Health Disparities in Alzheimer's Disease and Related Dementias: A Scientific Training Program

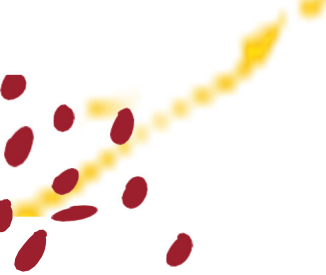
Thursday, October 24, 2019

- 1:25 – 1:50 p.m. Introduction to the National Institute on Aging and ADRD Funding Priorities
Cerise Elliott, PhD, National Institute on Aging
10. min. Q&A
- 1:50 – 2:00 p.m. Introduction to Dyad Activity
María P. Aranda, PhD, University of Southern California
- 2:00 – 2:30 p.m. Review/Refine Initial Research Interests and Specific Aims with Primary Mentor
- 2:30 – 2:45 p.m. Break
- 2:45 – 4:45 p.m. Group Activity: Early Career Scholars Presentations
5 min. lecture, 5 min. Q&A each
- 4:45 – 4:50 p.m. Day One Wrap-Up
María P. Aranda, PhD, University of Southern California
- 4:50 – 5:00 p.m. Afternoon Session Evaluation
- 5:00 – 6:00 p.m. Break
- 6:00 – 7:30 p.m. Networking – Alzheimer's Association Hosted Dinner
Wolfgang Puck Bar & Grill @ L.A. Live
800 W. Olympic Blvd., 90015

Funders



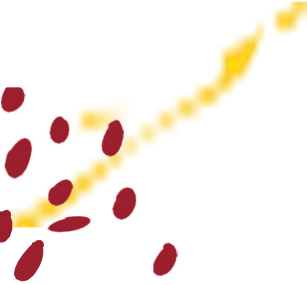
USC Suzanne Dworak-Peck
School of Social Work
Edward R. Roybal Institute on Aging



Interdisciplinary Aging Research to Address Health Disparities in Alzheimer's Disease and Related Dementias: A Scientific Training Program

Friday, October 25, 2019

- 8:00 – 8:30 a.m. Breakfast/Registration
- 8:30 – 8:45 a.m. Welcome & Introduction to Day 2
María P. Aranda, PhD, University of Southern California
- 8:45 – 10:05 a.m. PLENARY 3: INNOVATIONS IN CLINICAL RESEARCH WITH OLDER MINORITIES: LESSONS LEARNED - PART 1
- 8:45 a.m. Life Course Perspectives for Consideration for Interventions for Cognition
Roland J. Thorpe, PhD, John Hopkins University
10. min. Q&A
- 9:15 a.m. Methodological and Statistical Considerations in the Assessment of Racial Disparities and Health
Whitney R. Robinson, PhD, University of North Carolina at Chapel Hill
10. min. Q&A
- 9:45 a.m. Why this matters?
Mico Borders, Family Member
10. min. Q&A
- 10:05 – 10:30 a.m. NIA Funding for New and Early-Career Investigators: Selecting the Right Funding Opportunity at the Right Time
Shahrooz Vahedi, PhD, National Institute on Aging
10. min. Q&A
- 10:30 – 10:45 a.m. Break
- 10:45 – 12:05 p.m. PLENARY 4: INNOVATIONS IN CLINICAL RESEARCH WITH OLDER MINORITIES: LESSONS LEARNED - PART 2
- 10:45 a.m. Design and Implementation of the Hispanic Community Health Study/Study of Latinos – Investigation of Neurocognitive Aging (SOL-INCA)
Hector M. González, PhD, University of California San Diego
10. min. Q&A
- 11:15 a.m. Programa Esperanza: A Depression Comparativeness Trial for Older Latinos with Comorbid Depression and Medical Conditions
María P. Aranda, PhD, University of Southern California
10. min. Q&A
- 11:45 a.m. Why this matters?
Nora Manzanilla, Family Member
10. min. Q&A
- 12:05 – 12:15 p.m. Morning Session Evaluation
- 12:15 – 1:15 p.m. Networking - Alzheimer's Association Catered Lunch



Interdisciplinary Aging Research to Address Health Disparities in Alzheimer's Disease and Related Dementias: A Scientific Training Program

Thursday, October 25, 2019

1:15 – 2:30 p.m.

Designing the Methods Section of an NIA Submission

Introduction to Small Group Activity

María P. Aranda, PhD, University of Southern California

Cardinal Group - Scholar/Mentor Dyads

Charles D. Kaplan, PhD, University of Southern California

Cerise Elliott, PhD, National Institute on Aging

Gold Group - Scholar/Mentor Dyads

Shinyi Wu, PhD, University of Southern California

Shahrooz Vahedi, PhD, National Institute on Aging

2:30 – 2:45 p.m.

Break

2:45 – 4:45 p.m.

Group Activity: Early Career Scholars Presentations

5 min. lecture, 5 min. Q&A each

4:45 – 4:55 p.m.

Afternoon Session Evaluation

4:55 – 5:05 p.m.

Concluding Remarks and Certificates

Cerise Elliott, PhD, National Institute on Aging

Carl V. Hill, PhD, Alzheimer's Association

María P. Aranda, PhD, University of Southern California

Premier Sponsor

alzheimer's  association[®]

SPEAKERS AND MENTORS



María P. Aranda, PhD

Dr. Aranda is an Associate Professor at the Suzanne Dworak-Peck School of Social Work and holds a joint appointment with the Davis School of Gerontology at USC. She is also the Executive Director of the USC Edward R. Roybal Institute on Aging and the Director of Outreach, Recruitment and Engagement of the USC Alzheimer's Disease Research Center. Dr. Aranda is a psychotherapist with over 30 years of experience working with middle-aged and older adults and their families. She established the first Spanish-language support programs El Portal Latino Alzheimer's Project, Programa Esperanza, and Siempre Viva for individuals and families in East Los Angeles affected by depression and Alzheimer's disease. She currently serves on the National Academies of Sciences, Engineering, and Medicine's committee for care interventions for individuals with dementia and their caregivers. She earned her PhD in Social Work from USC.



Iris Aguilar, MSPA

Iris Aguilar is the Assistant Director of the University of Southern California (USC) Edward R. Roybal Institute on Aging at the USC Suzanne Dworak-Peck School of Social Work. Prior to joining USC, she was a project director at the UCLA Department of Geriatrics. Ms. Aguilar has more than 20 years of experience in the field of aging, and has worked in community agencies and major research universities to manage community-based research projects. She has a track record of establishing and sustaining strong partnerships with community groups through her work in program development and in facilitating focus and support groups. Ms. Aguilar earned her master's degree in Public Administration from Cal State LA, and is a doctoral student of Policy, Planning and Development at the USC Price School of Public Policy.



Mico Borders

Ms. Borders is a dedicated volunteer of the Alzheimer's Association where she facilitates support groups for caregivers and also speaks at Association-sponsored events. Her reason for volunteering is personal—for over a decade, she was the primary caregiver of her parents. Both were diagnosed with Alzheimer's disease. Ms. Borders believes that support groups are important for caregivers, particularly those who are new to the role, because they provide a sense of community and comfort in being with others experiencing similar situations. She reminds caregivers that they must practice patience and selflessness each day. Ms. Borders works for Home Depot as a purchaser. In her spare time, she is an avid gardener.



Arleen F. Brown, MD, PhD

Dr. Brown is a general internist and health services researcher with expertise in quality of care for older adults and minorities with diabetes. She was co-principal investigator of a study funded by the CDC to examine the quality of care for persons with diabetes in managed care. Dr. Brown also led a project for the Resource Centers for Minority Aging Research that focused on how zip codes may influence health for persons with chronic conditions such as hypertension, diabetes, and arthritis. Dr. Brown is currently working on projects to improve self-management skills in older African Americans and Latinos with diabetes. She received her MD from UC San Francisco (UCSF) and completed her residency at the UCSF Medical Center. Dr. Brown completed her fellowship through the Robert Wood Johnson Clinical Scholars Program and earned her PhD from UCLA.



Helena C. Chui, MD

Dr. Chui holds the Raymond and Betty McCarron Endowed Chair at the Keck School of Medicine and is internationally recognized for her research in Alzheimer disease and vascular cognitive impairment. She is the author of nearly 200 publications and has served on the editorial boards for Stroke, Alzheimer Disease and Associated Disorders and JAMA Neurology. Dr. Chui is the principal investigator for the NIA-funded Alzheimer Disease Research Center, as well as a multi-institutional program project on vascular dementia. Over the past 30 years, her research interests have focused on vascular contributions to cognitive impairment in late life. Dr. Chui earned her MD from the Johns Hopkins University School of Medicine and completed her residency in neurology and fellowship in Behavioral Neurology at the University of Iowa Hospitals and Clinics.



María M. Corrada, ScD

Dr. Corrada is a Professor in the Department of Neurology with a joint appointment in the Department of Epidemiology at UC Irvine. She is co-principal investigator and co-founder of The 90+ Study, a longitudinal epidemiological study. Her research interests include population-based longitudinal studies, the epidemiology of dementia, risk and protective factors, identifying factors that correlate with the presence of brain pathologies, and in particular understanding the cognitive and physical health of the oldest-old. She is a grant reviewer for the Alzheimer's Association and the National Institute on Aging, and associate editor for Alzheimer's and Dementia Journal. Dr.

Corrada earned her ScD in Epidemiology from the John Hopkins School of Public Health.



Eileen M. Crimmins, PhD

Dr. Crimmins is the AARP Professor of Gerontology in the Davis School of Gerontology at the University of Southern California. She is the Director of the USC/UCLA Center on Biodemography and Population Health, one of the Demography of Aging Centers supported by the U.S. National Institute on Aging, and the Director of the Multidisciplinary Training in Gerontology Program and the NIA-sponsored Network on Biological Risk. Dr. Crimmins is a co-investigator of the Health and Retirement Study in the U.S and has been instrumental in organizing and promoting the recent integration of the measurement of biological indicators in large population surveys. She recently served as co-chair of a Committee for the National Academy of Sciences to address low life

expectancy in the U.S. She earned her PhD in Demography from the University of Pennsylvania.



Cerise Elliott, PhD

Dr. Elliott is a Program Director for the Dementias of Aging Branch of the Division of Neuroscience (DN) where she creates evaluation and management systems for nine research portfolios. She also coordinates the health disparities program for Alzheimer's disease, administers the Alzheimer's Disease Centers program, and manages Data and Safety Monitoring Boards for Alzheimer's clinical trials. Dr. Elliott previously held positions in the NIH where she was the liaison to non-profit organizations, patient advocacy groups, the drug industry, and individuals. Her recent programmatic interests are creating new and effective scientific collaborations, facilitating successful mentoring relationships among grantees, and providing effective evaluation of program

development. Dr. Elliott earned her PhD in Neuroscience from the University of Nebraska Medical Center.



Hector M. González, PhD

Dr. Gonzalez is an Associate Professor in the Department of Neurosciences and the Shiley-Marcos Alzheimer's Disease Research Center in the School of Medicine at the University of California, San Diego. He is a licensed clinical neuropsychologist with clinical research training in Alzheimer's disease and related dementias. Dr. González was a clinical research fellow and later co-investigator of the Sacramento Area Latino Study on Aging, a landmark dementia study among Mexican-origin Latinos. He served as Principal Investigator of the Hispanic Community Health Study/Study of Latinos, Neurocognitive Reading Center. Dr. González is the Principal Investigator of the Study of Latinos-Investigation of Neurocognitive Aging (SOL-INCA), which is a SOL ancillary

study examining sociocultural, cardiometabolic and genomic risks of Mild Cognitive Impairment and ADRD among diverse Latinos.



Joshua D. Grill, PhD

Dr. Grill is an Associate Professor in the Department of Psychology at University of California, Irvine (UCI) and the Director of the UCI Institute for Memory Impairments and Neurological Disorders (MIND). Dr. Grill's research has been funded by the NIA, the National Institute of Neurological Disorders and Stroke, the Alzheimer's Association, the Hartford Foundation, and the American Federation for Aging Research. He serves on the Steering Committee and the Internal Ethics Committee of the Alzheimer's Disease Cooperative Study, and is part of a working group sponsored by the NIA and the Alzheimer's Association charged with creating a national strategy for recruitment to Alzheimer's disease clinical research. He earned his PhD in Neuroscience from the

Wake Forest School of Medicine.



Carl V. Hill, PhD

Dr. Hill is the Vice President of Scientific Engagement at the Alzheimer’s Association. In this role, he oversees strategic efforts to create global awareness of the Association’s international research program. Dr. Hill leads outreach to a network of staff, volunteers and donors at more than 75 Association chapters in order to grow understanding of the Association’s role in accelerating Alzheimer’s research and share scientific updates. Prior to joining the Association, Dr. Hill served as director of the Office of Special Populations at the National Institute on Aging (NIA). In his six years at the NIA, he led the development of the Health Disparities Research Framework, which stimulates studies focused on health disparities related to aging. Dr. Hill earned his PhD in Public

Health from the University of Michigan.



David K. Johnson, Ph.D.

Dr. Johnson is an Associate Clinical Professor specializing in Alzheimer’s Disease at the Neurology Department of the University of California, Davis. He is a licensed clinical psychologist with specialty training in clinical gerontology and neuropsychology. Prior to joining the faculty at UC Davis, he was an Associate Professor of Psychology at the University of Kansas (KU) with a joint appointment at the KU Gerontology Center. He was also the Director of Neuropsychology at the KU Alzheimer’s Disease Center. Dr. Johnson’s research interests include Alzheimer’s disease, traumatic brain injury and Latino older adult health. He has expertise in clinical and neuropsychological assessment of healthy brain aging and dementia. Dr. Johnson’s earned his

PhD in clinical psychology from Washington University in St. Louis.



Charles D. Kaplan, PhD

Dr. Kaplan is a Research Professor and Associate Dean of Research at the USC Suzanne Dworak-Peck School of Social Work. In this joint role, Dr. Kaplan researches the preclinical patterns of drug use with his research team, including the emergence of crack cocaine in Mexico City and the impact of the drug wars on Latino communities. A medical sociologist by training, he has sought a balance between social work, sociology, and social epidemiology during the course of his research career exploring the patterns of drug use, drug treatment strategies and social policy. Prior to joining the faculty at USC, Dr. Kaplan was Associate Dean of Research at the University of Houston.

Dr. Kaplan earned his PhD in sociology from UCLA.



Aziza Lucas-Wright, MEd

Ms. Lucas-Wright is an instructor and co-chair of the Department of Preventive and Social Medicine at Charles R. Drew University of Medicine and Science (CDU). She holds a Masters in Education from Loyola Marymount University. In addition to her full-time job, Ms. Lucas-Wright was also the primary caregiver of her husband, the late Reverend Ronald L. Wright. Rev. Wright was beloved by his church community and was a talented orator with a vibrant pastorate. He was diagnosed with Parkinson’s disease and Lewy Body dementia later in his life. From her experience as a caregiver, Ms. Lucas-Wright believes that compassionate, unbiased care and an understanding relationship between patient, caregiver, and physician is essential in every ADRD journey.



Jennifer J. Manly, PhD

Dr. Manly is a Professor of Neuropsychology in Neurology at the Gertrude H. Sergievsky Center and the Taub Institute for Research in Aging and Alzheimer’s disease at Columbia University. Her research on cognitive test performance among African American and Hispanic elders is currently funded by the NIA and the Alzheimer’s Association. Dr. Manly’s work clarifies the independent influences of language, acculturation, educational experiences, racial socialization, and socioeconomic status on cognitive test performance, with the ultimate goal of understanding more about the relationship between culture and cognition. Dr. Manly earned her PhD in Clinical

Psychology from the San Diego State University / University of California, San Diego Joint Doctoral Program.



Nora D. Manzanilla

Ms. Manzanilla is the Program Director of the Tobacco Enforcement Program (TEP) at the Office of the Los Angeles City Attorney. She is responsible for planning and implementing citywide enforcement efforts as it relates to the sale of tobacco products to persons under 21. Ms. Manzanilla is also responsible for analyzing the data of approximately 4,700 retailers in the City of Los Angeles and reporting findings to the Mayor and City Council. In addition to her full-time job, Ms. Manzanilla is also the primary caregiver of her mother, Gladys, who is currently experiencing end-stage Alzheimer's and requires 24/7 care.



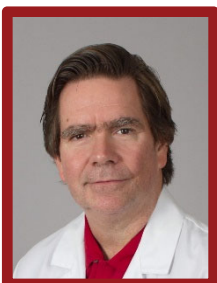
Christophe Marchand, PhD

Dr. Marchand is a Health Scientist Administrator at the NIH National Cancer Institute (NCI) Center for Research Strategy where he is involved in organizational capacity building. He is also a Captain of the U.S. Air Force's Civilian Air Patrol. Dr. Marchand is the recipient of three NCI Director's Innovation Awards for the development of novel high-throughput screening assays and the recipient of 16 Federal Technology Transfer Awards for the co-invention of 16 new classes of antiviral & anticancer drugs. He also served as a steering committee member for the NCI Center of Excellence in HIV/AIDS and Cancer Virology. Dr. Marchand earned his PhD in Molecular Pharmacology from the University of Paris, Pierre & Marie Curie.



Judy Pa, PhD

Dr. Pa is an assistant professor at the Institute for Neuroimaging and Informatics in the Keck School of Medicine and the department of Neurology. She completed a postdoctoral fellowship in Alzheimer's disease at UC San Francisco and then served five years as a faculty member. Dr. Pa's research is focused on identifying individuals at risk for Alzheimer's disease, understanding how Alzheimer's pathology impacts brain function in the living brain, and developing ways to remediate cognitive and brain dysfunction. Judy's research is supported by two early career awards from the National Institutes of Health and the Alzheimer's Association. Judy is also dedicated to teaching and is looking forward to training students in USC's new Neuroimaging master's program and the USC Neuroscience Graduate Program.



John M. Ringman, MD

Dr. Ringman is a Clinical Professor of Neurology at the Memory and Aging Center at the Keck School of Medicine of USC. He is board certified in neurology, behavioral neurology, and neuropsychiatry. Dr. Ringman's current activities include performing NIH-funded studies of persons with or destined to develop familial Alzheimer's disease due to known genetic mutations, clinical research in late-onset Alzheimer's disease in association with the USC Alzheimer's Disease Research Center, and seeing patients with cognitive or behavioral problems referable to neurological and neurodegenerative disease. He is a Shirley and Jack Goldberg Neuroscience Scholar and a recipient of the Turken Research Award. He earned his MD from McGill University in Montreal, Canada and completed internship and residency at Baylor College of Medicine in Houston, Texas.



Whitney R. Robinson, PhD

Dr. Robinson is an Associate Professor of Epidemiology at the University of North Carolina (UNC) Gillings School of Global Public Health, the co-leader of the UNC Social Epidemiology Program, a fellow at the Carolina Population Center, and a member of the UNC Lineberger Comprehensive Cancer Center. She specializes in quantitative methodology for studying health inequalities. The central motivation of Dr. Robinson's research is showing how social and environmental factors underpin race and sex differences in health. She currently leads an NIH RO1 grant to use health care data to investigate racial/ethnic differences in hysterectomy rates among young women and also leads an RO3 grant to investigate the obesity paradox among people diagnosed with renal cell carcinoma. She earned her PhD in Epidemiology from the University of North Carolina at Chapel Hill.



Roland J. Thorpe, Jr., PhD

Dr. Thorpe is an Associate Professor of Health, Behavior and Society at the Johns Hopkins Bloomberg School of Public Health. He holds a joint appointment in Medicine and Neurology at the Johns Hopkins University School of Medicine. Dr. Thorpe serves as the Director of the Program for Research on Men's Health at the Hopkins Center for Health Disparities Solutions. He is also a member of the Advisory Committee on Minority Health at the U.S. Department of Health and Human Services. Dr. Thorpe's research focuses on racial and socioeconomic health disparities, particularly among men in the U.S. He has worked to develop mentoring programs to train graduate students, postdoctoral students, and faculty on being mentors to undergraduate

students. Dr. Thorpe earned his PhD from Purdue University.



Shahrooz Vahedi, PhD

Dr. Vahedi is a Training Officer at the NIA. He manages, enhances, and evaluates all training and career development awards at NIA, which include institutional NRSA T32, T35, and F30, F31, and F32 Individual Fellowship Training Programs, as well as all K career development funding mechanisms. He is also the first point of contact for the Loan Repayment Program application, review, funding, and tracking at NIA. Dr. Vahedi is also a member of NIH's Diversity Supplement Point of Contact committee, where he represents NIA to coordinate conceiving, planning, implementing, and evaluating trans-NIH activities and initiatives to improve diversity in health-related research workforce. Dr. Vahedi earned his PhD in Microbiology and Immunology from the

Rosalind Franklin University of Medicine and Science in Chicago.



Shinyi Wu, PhD

Dr. Wu is an Associate Professor at the USC Suzanne Dworak-Peck School of Social Work with a joint appointment at the USC Viterbi School of Engineering. She is also a senior scientist at the USC Edward R. Roybal Institute on Aging. Dr. Wu is an industrial and systems engineer who specializes in health systems. Her research seeks to design effective health systems that deliver better patient-centered outcomes at lower cost. She was the principal investigator of the Diabetes-Depression Care-Management Adoption Trial to design and evaluate an innovative application to implement evidence-based depression care management to improve outcomes for underserved populations. She has also led studies of the effectiveness of systems redesign approaches. Dr. Wu

earned her PhD from the University of Wisconsin-Madison.



Julie M. Zissimopoulos, PhD

Dr. Zissimopoulos is an Associate Professor at the USC Sol Price School of Public Policy. She serves as the Director of Research Training and Director of the Initiative on Aging and Cognition at the Schaeffer Center for Health Policy and Economics. Dr. Zissimopoulos is also co-director of the NIA-funded and Alzheimer's-focused USC Resource Center for Minority Aging Research. Her research applies insights and methods from economics to several health policy areas such as risk and health care costs of Alzheimer's disease, medical expenditures, caregiving and financial support between generations of family members. She leads several NIA-funded research projects on the health of caregivers for persons with dementia, the use of and response to drug therapies for non-

Alzheimer's disease conditions that influence risk of Alzheimer's disease, and racial and ethnic disparities in health care treatment for Alzheimer's disease. Dr. Zissimopoulos earned her PhD in Economics from UCLA.

Partner Sponsor

UsAgainstAlzheimer's

EARLY CAREER SCHOLARS



Susan J. Flowers Benton, PhD

Dr. Benton is an Assistant Professor in the Department of Rehabilitation and Disability Studies at Southern University and A&M College in Baton Rouge, LA. Her proposed project aims to explore the effectiveness of Living Well Together intervention in older African Americans and lay the groundwork for expansion of the program into the Houma, Louisiana community. This project builds on the work in her dissertation, which she was awarded a highly competitive R36 dissertation grant from the NIA to complete. Dr. Benton was also recently awarded an RO3 supporting the development of the next generation of ADRD

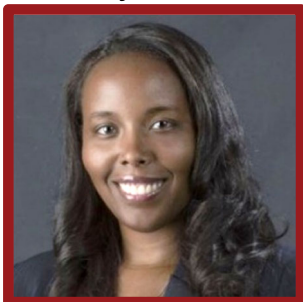
researchers. She cites her experiences witnessing the devastating effects poorly controlled chronic illnesses have had on the African American community and her role as a caregiver as the reasons for her dedication to eliminating health disparities and promoting healthy aging in marginalized communities. Dr. Benton earned her PhD in Rehabilitation Psychology from the University of Wisconsin-Madison.



David Camacho, PhD

Dr. Camacho is a Post-Doctoral Fellow in the Department of Geriatrics and Palliative Care at Weill Cornell Medicine. Dr. Camacho's research agenda is guided by his experiences as a clinical social worker, researcher, and by his caregiving experience to aging loved ones with comorbid physical and mental health problems. Dr. Camacho's proposed project focuses on reducing suffering via the examination of physical and mental health needs of older adults and the implementation of clinically relevant interventions, particularly for Spanish speaking older Latinos. Dr. Camacho's research has been published in several scholarly journals and builds a foundation for work that addresses and reduces

suffering among ethnic and sexual minority older adults. He earned his PhD in Social Work from Columbia University.



Robynn Cox, PhD

Dr. Cox is an Assistant Professor at the University of Southern California (USC) Suzanne Dworak-Peck School of Social Work, a faculty affiliate at the Edward R. Roybal Institute on Aging, and a faculty affiliate at the USC Schaeffer Center for Health Policy and Economics. Dr. Cox is an economist who is primarily an inequality researcher concerned with understanding the social and economic consequences of criminal justice policies in general, and mass incarceration in particular. The specific focus of her research has been on prisoner reentry using a life course approach to examine how structural factors and early life experiences, such as incarceration, may lead to racial disparities in health,

other measures of wellbeing, and successful aging. Her proposed project seeks to understand the association between incarceration, cognitive functioning, and racial disparities in cognitive functioning. Dr. Cox earned her PhD in Economics from Georgia State University.



Chanee D. Fabius, PhD

Dr. Fabius is an Assistant Professor in the Department of Health Policy and Management at the Bloomberg School of Public Health at Johns Hopkins University. She is a gerontologist and health services researcher whose research seeks to inform aging and disability policies to reduce health care disparities and improve health equity for older adults and people with disabilities using long-term services and supports (LTSS). Her interests are informed by her applied, clinical care management experience, where she helped older adults remain at home and delay the need for nursing home care. Dr. Fabius' proposed project seeks to better understanding networks of care and to examine the effect of community-based LTSS utilization on quality of life and health service

utilization across diverse groups of older adults. She earned her PhD in Human Development and Family Studies from the University of Connecticut.



Marc Garcia, PhD

Dr. Garcia is an Assistant Professor in the Department of Sociology and Institute of Ethnic Studies at the University of Nebraska-Lincoln. His current research examines how race/ethnicity, nativity, gender, and key social and economic factors shape cognitive functioning (i.e. cognitive impairment/dementia), and mortality trajectories of aging minority and immigrant groups in the United States. Dr. Garcia's future research plans are to investigate how environmental factors (i.e. social/physical environment) may contribute to heterogeneous cognitive outcomes among older Latinos through differential exposure to

socioeconomic inequality, ethnic segregation and isolation, and lack of access to high quality health, particularly among the foreign-born. The goal of his proposed project is to identify potential mechanisms and multifactorial processes underlying the pathways that create and sustain cognitive health disparities among older Latino populations. Dr. Garcia earned his PhD in Sociology of Health from the University of Texas, Austin.



Elizabeth A. Luth, PhD

Dr. Luth is a T32 Postdoctoral Associate in Behavioral Geriatrics and Palliative Medicine at Weill Cornell Medicine. Elizabeth's graduate research focused on social and demographic disparities in assessments of end-of-life care quality in older adults. She is extending this work at Weill Cornell by investigating racial and ethnic disparities in quality of care for patients with advanced dementia near the end of life. Dr. Luth's proposed project tests a culturally inclusive, clinically useful training and tool for home hospice clinicians to support family caregivers in providing care to dying patients with ADRD. She seeks to contribute to developing practical, scalable solutions for improving care and support for home hospice patients with dementia and their family caregivers

while attending to and reducing sociodemographic disparities in outcomes. She earned her PhD in Sociology from Rutgers University.



Heehyul Moon, PhD

Dr. Moon is an Assistant Professor at the Raymond A. Kent School of Social Work at the University of Louisville in Kentucky. Her long-term research interest lies in enhancing quality of life of vulnerable and underserved elderly and their families through interdisciplinary and translational research. Dr. Moon's proposed project addresses a priority area for the NIA: to reduce or eliminate challenges associated with dementia care for care recipients and their caregivers due to racial/ethnic differences in report of receiving a diagnosis, versus objective dementia classification. She is very interested in dyadic interpretation of caregiving when both patients and their family

members serve as sources of data and its impact on their dyadic relationship quality and physical and mental health. Dr. Moon earned her PhD in Social Welfare from Case Western Reserve University.



Maria Mora Pinzon, MD

Dr. Mora Pinzon is a Post-Doctoral Research Fellow and Assistant Scientist at the University of Wisconsin-Madison. Her professional interests include working in health equity and its intersection with dissemination and implementation science in communities of color, particularly in topics affecting older adults. Dr. Mora Pinzon's proposed project seeks to design and test an instrument to identify the barriers to seeking care among Latinx individuals. The long-term goal of this work is to improve early diagnosis of dementia in Latinx communities by decreasing barriers to seeking care. Dr. Mora Pinzon holds leadership positions in the Young Physician Section of the

American College of Preventive Medicine and the National Hispanic Medical Association. She earned her MD from the Universidad Central de Venezuela and completed her residency in Preventive Medicine at the University of Wisconsin-Madison.



Stacey L. Schepens Niemiec, PhD, OTR/L

Dr. Schepens Niemiec is an Assistant Professor of Research at the USC Chan Division of Occupational Science and Occupational Therapy. Her work centers on the underlying mechanisms that facilitate or inhibit healthy aging, as well as methodologies that emphasize activity participation. Dr. Schepens Niemiec relies on a multidisciplinary combination of occupational therapy, instructional technology, and gerontology principles to guide her investigations. She was recently awarded a R21 grant to adapt a physical activity smartphone app (originally for healthy older adults) to seniors with mild cognitive impairment/mild dementia. Her proposed project seeks to extend this

intervention to underserved seniors who live in rural communities. Dr. Schepens Niemiec received her PhD in Instructional Technology from Wayne State University in Detroit.



Priscilla M. Vásquez Guevara, PhD

Dr. Vásquez is a Post-Doctoral Scholar in the Department of Neurosciences at the University of California, San Diego where she provides research support to the Alzheimer's Disease-Related Resources Center for Minority Aging Research, San Diego Resource Center for Advancing Alzheimer's Research in Minority Seniors (SD-ADRCMAR). Her pursuit of a career in ADRD research is driven by a strong interest in existing health disparities in cognitive health among a rapidly aging Latino population. Dr. Vásquez's past research was based on community-based interventions and epidemiological data using the Hispanic Community Health Study/Study of Latinos (HCHS/SOL), which provided a unique basis to

conduct investigations related to maintaining cognitive health and fostering cognitive resilience among Latinos. Her proposed project is anchored on identifying avenues of prevention for ADRD and will incorporate both social environmental factors as well as examining the cardiovascular contributions to cognitive function. Dr. Vásquez earned her PhD in Kinesiology from the University of Illinois, Chicago.

Funding for this conference was made possible in part by 1 R13 AG 063477 - 01 from the National Institute on Aging. The views expressed in written conference materials or publications and by speakers and moderators do not necessarily reflect the official policies of the Department of Health and Human Services; nor does mention by trade names, commercial practices, or organizations imply endorsement by the U.S. Government. Additional conference support was made possible by a generous contribution from our premier sponsor, The Alzheimer's Association, with added support provided by UsAgainstAlzheimer's.

