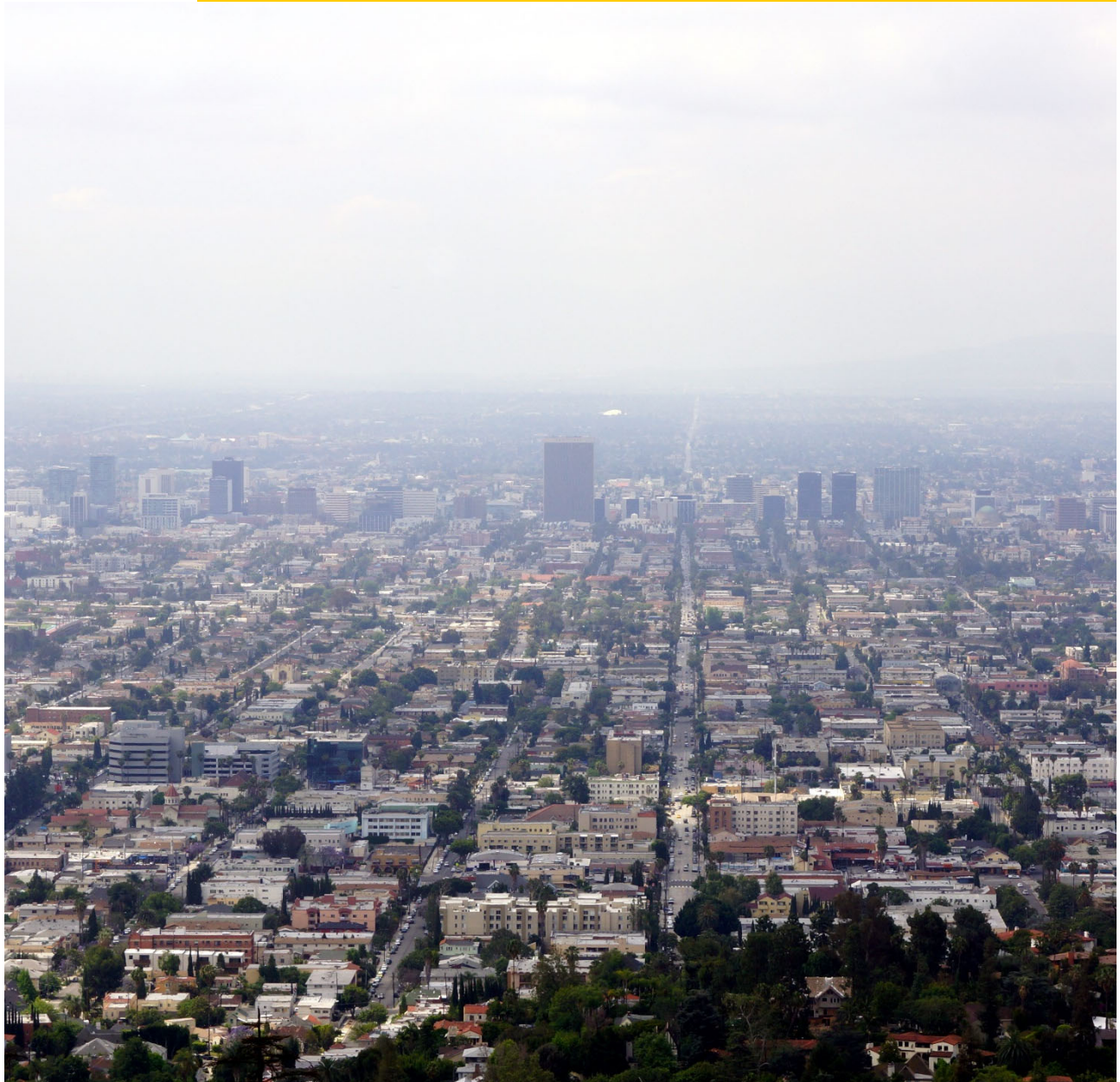


20  
20

# YEAR END REVIEW

*USC Edward R. Roybal Institute on Aging*



**USC** Suzanne Dworak-Peck  
School of Social Work

## Executive Summary from the Executive Director

The USC Edward R. Roybal Institute on Aging is a premier research institute dedicated to advancing research, policy, and practice to improve the lives of older adults and their families from diverse communities locally, regionally, and globally. From its inception, the USC has consistently pursued interdisciplinary, innovative, and just solutions to improve older adults' health, psychological well-being, social connectedness, home, income security, and the communities and systems of care that enhance purposeful aging. We are proudly steeped in the community and collaborate intensively with agencies, groups, and residents to further equity in scientific participation.



Our diverse team of dedicated scientists, postdoctoral scholars, staff, and students conduct state-of-the-art research that informs opinion influencers and decision-makers, executives from community-based agencies, lawmakers, government analysts, media, private-sector leaders, and the individuals and families we ultimately serve. Through innovative and high-impact research in the service of older adults, adults living with disabilities, and their family members, we dedicate our mission to the following six scientific areas:

Family and Social Relationships  
Services and Systems of Care  
Individual and Community  
Engagement

Equity and Sociocultural  
Competencies  
Technology  
Education and Training

This document highlights the rich scientific productivity, intensive community engagements, and educational opportunities that make the Institute what it is and where it is going. We are at the forefront of testing interventions to improve the lives of individuals and families living with Alzheimer's, identifying how older adults perceive stigma around dementia, developing best practices to provide services to people experiencing homelessness during COVID-19, developing consumer-friendly technologies to enhance chronic disease management, international family relationships, and mentoring programs for early-career NIH investigators. The Institute is steadfast in examining the economic and health indicators of formally-incarcerated adults, working with community networks of advocates for older

adults, and examining the role of the health workforce in predicting mortality in rural/urban areas. Since 2010, our Institute generated more than \$5.53 million in research and training grants from notable funders such as the National Institute on Aging, National Institute of Mental Health, the Patient-Centered Outcomes Research Institute, John Templeton Foundation, the California Department of Public Health, among others.

Our vision for the future continues with our historical commitment to address diversity, equity, and inclusion among underrepresented groups and generate research with rapid and tangible applications to individuals, families, communities, and organizations. Towards these goals, we established several Institute priority areas: 1) *Alzheimer's disease and family caregiving*; 2) *disparities in minority health and health equity*; and 3) *training the next generation of scientists dedicated to aging research and health disparities*. To address these priority areas, we partner with other USC research centers to create synergies and opportunities to scale our efforts: Schaeffer Center on Health Policy & Economics, the Alzheimer's Disease Resource Center for Minority Aging Research, and the Alzheimer's Disease Research Center. We will continue our collaborations with our community partners, such as White Memorial Medical Center, the City and County Departments on Aging, Alzheimer's Los Angeles, St. Barnabas Senior Services, AARP, Public Housing, Alzheimer's Association, UsAgainstAlzheimer's and consumer groups of older community advocates. Our goal in the next two years is to obtain significant funding from federal funders, private donors, and foundations to buttress Institute activities and community impact.

A note on COVID-19: The pandemic has had a significant impact on our ability to community-based research to the degree that we eliminated within-community, face-to-face engagement, and data collection. Our research participants fall into the at-risk categories, and thus we respect their right to be safe during the active pandemic. We adapted by including remote/digital methods to continue our research activities on-the-ground and our virtual offices.



María P. Aranda, PhD, MSW, MPA, LCSW  
Executive Director, and Associate Professor of Social Work

---

## New Staff

---



**Ángela Gutiérrez, PhD, MPH**, is a Provost postdoctoral research associate at the USC Edward R. Roybal Institute on Aging. Her interdisciplinary research focuses on improving health and quality of life among diverse populations. She completed her doctoral training in Community Health Sciences at the UCLA Fielding School of Public Health.



**Rene Maldonado, MS** serves as a Project Assistant at the USC Edward R. Roybal Institute on Aging. Maldonado earned his Bachelor of Arts degree in Psychology and Spanish from Pacific Union College, a Master's degree in Kinesiology from Louisiana State University, and a Master's degree in Prevention Science from the University of Oregon.



**Jessica Diaz, BA** is a Master of Social Work Intern from the USC Suzanne Dworak-Peck School of Social Work.  
Expected Graduation Date: January 2021  
Concentration: Community Development



**Jessica Armendariz, BA** is a Master of Social Work Intern from the USC Suzanne Dworak-Peck School of Social Work.  
Expected Graduation Date: May 2022  
Concentration: Social Change and Innovation

---

## Appointments

---

**María P. Aranda**

Member, Steering Committee for the National Institute on Aging National Research Summit on Care, Services, and Supports for Persons with Dementia and their Caregivers.

Member, National Academies of Sciences, Engineering, and Medicine Committee on Care Interventions for Individuals with Dementia and Their Caregivers, Phases I and II.

USC Racial Equity, Diversity, and Inclusion (REDI) Task Force

**Iris Aguilar**

Member, UsAgainstAlzheimer's Index Working Group

Member, Confidently Navigating Financial Decisions and Enhancing Financial Wellbeing in Dementia Caregiving (CONFIDENCE) Advisory Council

---

## New or Refunded Studies

---

Alzheimer's Disease Research Center, Outreach, Recruitment, and Education Core

**Co-I: María P. Aranda**

National Institute on Aging (1P30AGO66530-01)

Testing Savvy Caregiver in a Racially and Ethnically Diverse Sample in Southern California

**PI: María P. Aranda**

California Department of Public Health (19-10538)

NIA AD/ADRD Health Care Systems Research Collaboratory

**Co-I: María P. Aranda**

National Institute on Aging (1U54AGO63546-01)

---

## COVID-19 Response

---



- Organizational Responses to COVID-19 by Agencies Dedicated to Serving Older Adults and Persons Living with Disabilities  
PI: **María P. Aranda**
- Engaging Diverse Communities in COVID-19 Control: A Value-Based Measure of Health-Safety Climate for Decision Making  
PI: **Michalle Mor Barak, Charles Kaplan, and Shinyi Wu**  
USC Zumberge Epidemic and Virus Grant
- Comparative Effectiveness of Single-Site and Scattered-Site Permanent Supportive Housing on Patient-Centered and COVID-19 Related Outcomes for People Experiencing Homelessness  
PI: **Benjamin Henwood and Lillian Gelberg, MD**  
Patient-Centered Outcomes Research Institute

---

## Publications

---

1. Dilworth-Anderson, P., Moon, H., & **Aranda, M. P.** (2020). Dementia caregiving research: Expanding and reframing the lens of diversity, inclusivity, and intersectionality. *The Gerontologist*, *60*(5), 797-805. <https://doi.org/10.1093/geront/gnaa050>
2. Ferdows, N. B., **Aranda, M. P.**, Baldwin, J. A., Baghban Ferdows, S., Ahluwalia, J. S., & Kumar, A. (2020). Assessment of racial disparities in mortality rates among older adults living in US rural and urban counties from 1968 to 2016. *JAMA Network Open*, *3*(8), Article e2012241. <https://doi.org/10.1001/jamanetworkopen.2020.12241>
3. Garcia, C., Rivera, F. I., Garcia, M. A., Burgos, G., & **Aranda, M. P.** (2020). Contextualizing the COVID-19 era in Puerto Rico: Compounding disasters and parallel pandemics. *Journal of Gerontology, Series B: Psychological and Social Sciences*. Advance online publication, October 28, 2020. <https://doi.org/10.1093/geronb/gbaa186>
4. Liang, J., **Aranda, M. P.**, & Lloyd, D. A. (2020). Association between role overload and sleep disturbance among dementia caregivers: The impact of social support and social engagement. *Journal of Aging and Health*, *32*(10), 1345-1354. <https://doi.org/10.1177/0898264320926062>
5. Liang, J., **Jang, Y.**, & **Aranda, M. P.** (2020). Stigmatizing beliefs about Alzheimer's disease in diverse ethnic groups of Asian Americans. *Health and Social Care in the Community*. Advance online publication, October 22, 2020. <https://doi.org/10.1111/hsc.13208>
6. Quiñones, A. R., Mitchell, S. L., Jackson, J. D., **Aranda, M.P.**, Dilworth-Anderson, P., McCarthy, E. P., & Hinton, L. (2020). Achieving health equity in embedded pragmatic trials for people living with dementia and their family caregivers. *Journal of the American Geriatrics Society*, *68*(S2), S8-S13. <https://doi.org/10.1111/jgs.16614>

7. Yu, K., **Wu, S.**, **Jang, Y.**, Chou, C., Wilber, K., **Aranda, M.**, & **Chi, I.** (2020). Longitudinal assessment of the relationships between geriatric conditions and loneliness. *Journal of the American Medical Directors Association*. Advance online publication, October 15, 2020.  
<https://doi.org/10.1016/j.jamda.2020.09.002.4.37>
8. National Academies of Sciences, Engineering, and Medicine Committee on Functional Assessment for Adults with Disabilities. (2019). *Functional Assessment for Adults with Disabilities*. National Academies Press.  
(**Aranda, M.P.**, member)
9. **Chi, I.**, Liu, M., & Wang, S. (2020). Developing the Asian Pacific Islander Caregiver Train-the-Trainer program in the United States. *Journal of Ethnic & Cultural Diversity in Social Work*, 29(6), 490-507.  
<https://doi.org/10.1080/15313204.2018.1536906>
10. Bai, Z., Luo, S., Zhang, L., Wu, S., & **Chi, I.** (2020). Acceptance and Commitment Therapy (ACT) to reduce depression: A systematic review and meta-analysis. *Journal of Affective Disorders*, 260, 728-737.  
<https://doi.org/10.1016/j.jad.2019.09.040>
11. Hsiao, H., Chen, Y., Yu, P. L., Tseng, J. T., Kuo, S., Hu, Y. H., Ko, Y., **Chi, I.**, & **Wu, S.** (2020). Health awareness, attitudes, and behaviors among young-adult tutors in the Intergenerational Mobile Technology Opportunities Program in Taiwan. *Journal of the Society for Social Work and Research*, 11(1), 83-102. <https://doi.org/10.1086/705416>
12. **Jang, Y.**, Powers, D. A., Park, N. S., Chiriboga, D. A., **Chi, I.**, & Lubben, J. (2020). Performance of an abbreviated Lubben Social Network Scale (LSNS-6) among three ethnic groups of older Asian Americans. *The Gerontologist*. Advance online publication, October 6, 2020.  
<https://doi.org/10.1093/geront/gnaa156>
13. Kwan, R., Kwan, C.W., Bai, Y., & **Chi, I.** (2020). Cachexia and cognitive function in the community-dwelling older adults: Mediation effects of oral health. *Journal of Nutrition, Health & Aging*, 24(2), 230-236.  
<https://doi.org/10.1007/s12603-019-1303-x>



14. La, I. S., Lee, M. C., Hinderer, K. A., **Chi, I.**, Liu, R., Liu, M., & Fu, Y. (2020). Palliative care for Asian American adult population: A scoping review. *American Journal of Hospice and Palliative Medicine*. Advance online publication, June 3, 2020. <https://doi.org/10.1177/1049909120928063>
15. Lee, Y., **Chi, I.**, & Ailshire, J. A. (2020). Life transitions and leisure activity engagement among older Americans: Findings from a national longitudinal study. *Ageing and Society*, 40(3), 537-564. <https://doi.org/10.1017/S0144686X18001101>
16. Liu, M., Jiang, T., Yu, K., **Wu, S.**, Jordan-Marsh, M., & **Chi, I.** (2020). Care Me Too, a mobile app for engaging Chinese immigrant caregivers in self-care: Qualitative usability study. *JMIR Formative Research*, 4(12), Article e20325. <https://doi.org/10.2196/20325>
17. Lou, W.V., & **Chi, I.** (2020). Is China ready for dementia? *Journal of Alzheimer's & Neurodegenerative Diseases*. Advance online publication, April 15, 2020. <https://doi.org/10.24966/AND-9608/100041>
18. Mao, W.Y., Guo, M., Xu, L., Liu, J., & **Chi, I.** (2020). Intergenerational support and self-rated health among older Chinese immigrants: Do depressive symptoms play a mediating role? *China Journal of Social Work*. Advance online publication, July 20, 2020. <https://doi.org/10.1080/17525098.2020.1792644>
19. Mao, W. Y., Li, J., Xu, L., & **Chi, I.** (2020). Acculturation and health behaviors among older Chinese immigrants in the United States: A qualitative descriptive study. *Nursing and Health Sciences*, 22(3), 714-722. <https://doi.org/10.1111/nhs.12718>
20. Mao, W.Y., Silverstein, M., **Prindle, J. J.**, & **Chi, I.** (2020). The reciprocal relationship between instrumental support from children and self-rated health among older adults over time in rural China. *Journal of Aging and Health*, 32(10), 1528-1537. <https://doi.org/10.1177/0898264320943759>
21. Tang, F., Zhang, W., **Chi, I.**, Li, M., & Dong, X. Q. (2020). Importance of

- activity engagement and neighborhood to cognitive function among older Chinese Americans. *Research on Aging*, 42(7-8), 226-235.  
<https://doi.org/10.1177/0164027520917064>
22. Wu, J., Liu, M., Ouyang, Y., & Chi, I. (2020). Beyond just giving care: Exploring the role of culture in Chinese American personal care aides' work. *Journal of Cross-Cultural Gerontology*, 35(3), 255-272.  
<https://doi.org/10.1007/s10823-020-09404-w>
23. Yu, K., Wu, S., & Chi, I. (2020). Internet use and loneliness of older adults over time: The mediating effect of social contact. *The Journals of Gerontology: Series B*, Article gbaa004.  
<https://doi.org/10.1093/geronb/gbaa004>
24. Yu, K., Wu, S., Lee, P.-J., Wu, D.-A., Hsiao, H.-Y., Tseng, Y.-C., Wang, Y.-W., Cheng, C.-F., Wang, Y.-H., Lee, S.-P., & Chi, I. (2020). Longitudinal effects of an intergenerational mhealth program for older type 2 diabetes patients in rural Taiwan. *Diabetes Educator*, 46(2), 206-216.  
<https://doi.org/10.1177/0145721720907301>
25. Cox, R. (2020). The role of broad-based employee ownership opportunities in prisoner reentry. *AEA Papers & Proceedings*, 110, 424-429.  
<https://doi.org/10.1257/pandp.20201114>
26. Cox, R. (2020). Applying the theory of social good to mass incarceration and civil rights. *Research on Social Work Practice*, 30(2), 205-218.
27. Cox, R., Lahey, J., Rhoades, H., Henwood, B., & Wenzel, S. (2020). Does the timing of incarceration impact the timing and duration of homelessness? Evidence from "The Transitions to Housing" Study. *Justice Quarterly*. Advance online publication, April 15, 2020.  
<https://doi.org/10.1080/07418825.2019.1709883>
28. Henwood, B.F., Redline, B., & Lahey, J. (2020). Surveying tenants of permanent supportive housing in Skid Row about COVID-19. *Journal of Health Care for the Poor and Underserved*, 31(4), 1587-1594.  
<https://doi.org/10.1353/hpu.2020.0120>

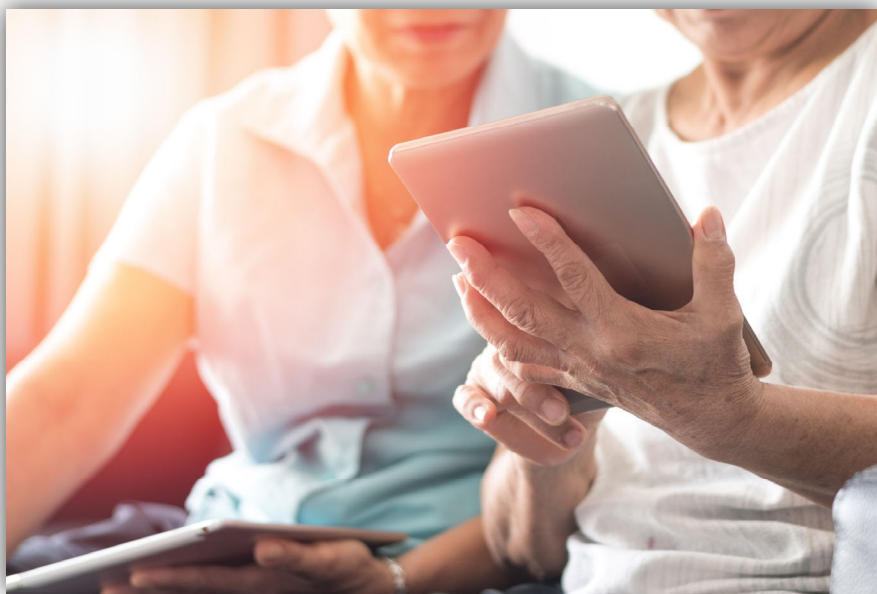
29. **Henwood, B. F.**, Rhoades, H., Lahey, J., Pynoos, J., Pitts, D. B., & Brown, R. T. (2020). Examining fall risk among formerly homeless older adults living in permanent supportive housing. *Health & Social Care in the Community*, 28(3), 842-849.
30. **Henwood, B. F.**, Siantz, L., Center, K., Bataille, G., Pomerance, E., Clancy, J., & Gilmer, T. (2020). Advancing integrated care through practice coaching. *International Journal for Integrated Care*, 20(2), 1-7. <https://doi.org/10.5334/ijic.4737>
31. La Motte-Kerr, W., Rhoades, H., **Henwood, B. F.**, Rice, E., & Wenzel, S. (2020). Exploring the association of community integration in mental health among formerly homeless individuals living in permanent supportive housing. *American Journal of Community Psychology*, 66(1-2), 3-13. <https://doi.org/10.1002/ajcp.12459>
32. Rhoades, H., Hsu, H.-T., **Rice, E.**, Harris, T., LaMotte-Kerr, W., Winetrobe, H., **Henwood, B.**, & **Wenzel, S. L.** (2020). Social network change after moving into permanent supportive housing: Who stays and who goes? *Network Science*. Advance online publication, July 13, 2020. <https://doi.org/10.1017/nws.2020.19>
33. Semborski, S., Rhoades, H., **Henwood, B.**, **Rice, E.**, & **Wenzel, S.** (2020). Gender differences in residents' intention to leave permanent supportive housing. *Journal of the Society for Social Work and Research*. Advance online publication, December 17, 2020. <https://doi.org/10.1086/712505>
34. Siantz, E., Redline, B., & **Henwood, B. F.** (2020). Practice facilitation in integrated behavioral health and primary care settings: A scoping review. *Journal of Behavioral Health Services & Research*. Advance online publication, May 26, 2020. <https://doi.org/10.1007/s11414-020-09709-1>
35. Cho, Y. J., **Jang, Y.**, Ko, J. E., Lee, S. H., & Moon, S. K. (2020). Perceived discrimination and depressive symptoms: A study of Vietnamese women who migrated to South Korea due to marriage. *Women & Health*, 60(8), 863-871. <https://doi.org/10.1080/03630242.2020.1766640>
36. Choi, E. Y., & **Jang, Y.** (2020). Subjective age in older Korean Americans: The impact of functional disability mediated by attitudes toward aging.

- International Journal of Aging and Human Development*, 9(4), 563-580.  
<https://doi.org/10.1177/0091415019887677>
37. Choi, E. Y., **Jang, Y.**, & Chiriboga, D. A. (2020). Gender as a moderator of the effect of education and acculturation on cognitive function: A study of older Korean immigrants. *Journal of Aging and Health*, 32(10), 1659-1666.  
<https://doi.org/10.1177/0898264320950554>
38. **Jang, Y.**, Chiriboga, D. A., Park, N. S., Yoon, H., Cho, Y. J., Hong, S., Nam, S., Rhee, M. K., Bernstein, K. S., & Kim, M. T. (2020). The role of self-rated mental health in seeking professional mental health services among older Korean immigrants. *Aging and Mental Health*. Advance online publication, April 30, 2020.  
<https://doi.org/10.1080/13607863.2020.1758908>
39. **Jang, Y.**, Choi, E. Y., Rhee, M. K., Park, N. S., Chiriboga, D. A., & Kim, M. T. (2020). Determinants of self-rated cognitive health in older Korean Americans. *The Gerontologist*, 60(2), 250-258.  
<https://doi.org/10.1093/geront/gnz134>
40. **Jang, Y.**, Choi, E. Y., Rhee, M. K., Yoon, H., Park, N. S., & Chiriboga, D. A. (2020). Older Korean Americans' concerns about Alzheimer's disease: The role of immigrant-related factors and objective and subjective cognitive status. *Aging and Mental Health*. Advance online publication, January 31, 2020. <https://doi.org/10.1080/13607863.2020.1720596>
41. **Jang, Y.**, Choi, E. Y., Yoon, H., Park, N. S., Chiriboga, D. A., & Kim, M. T. (2020). Self-rated physical, mental, oral, and cognitive health in older Korean immigrants: The role of health indicators and sociocultural factors. *Journal of Immigrant and Minority Health*. Advance online publication, September 29, 2020. <https://doi.org/10.1007/s10903-020-01087-2>
42. **Jang, Y.**, Park, N. S., Chiriboga, D. A., Rhee, M. K., Yoon, H., & Kim, M. T. (2020). Healthcare navigation self-sufficiency in older Korean immigrants. *Journal of Applied Gerontology*, 39(5), 457-462.  
<https://doi.org/10.1177/0733464819842495>
43. **Jang, Y.**, Rhee, M. K., Jeong, C. H., Choi, E. Y., Park, J., & Park, N. S. (2020).

- Oral health and dental care in older Korean immigrants in the United States: A qualitative study. *Dental Research and Oral Health*, 3(2), 83-95. <https://doi.org/10.26502/droh.0023>
44. Jang, Y., Rhee, M. K., Jeong, C. H., Lee, W. J., Yamada, A.-M., Jin, H., & Suarez-Durall, P. (2020). The impact of discriminatory experiences on use of Medicaid-funded dental care services in California. *Dental Research and Oral Health*, 3(1), 1-10. <https://doi.org/10.26502/droh.0016>
45. Jung, H., Cho, Y. J., Rhee, M. K., & Jang, Y. (2020). Stigmatizing beliefs about depression in diverse ethnic groups of Asian Americans. *Community Mental Health Journal*, 56(1), 79-87. <https://doi.org/10.1007/s10597-019-00481-x>
46. Park, N. S., Jang, Y., Chiriboga, D. A., & Chung, S. (2020). The role of social networks on depressive symptoms: A comparison of older Koreans in three geographic areas. *International Journal of Aging and Human Development*. Advance online publication, February 14, 2020. <https://doi.org/10.1177/0091415020905553>
47. Park, N. S., Jang, Y., Rhee, M. K., Yoon, H., & Chiriboga, D. A. (2020). Knowledge about Alzheimer's disease and awareness of Alzheimer's disease-related services in older Korean Americans: The role of social capital. *Journal of Applied Gerontology*. Advance online publication, March 13, 2020. <https://doi.org/10.1177/0733464820911533>
48. Rhee, M. K., & Jang, Y. (2020). Factors associated with designation of a substitute decision-maker in older Asian Americans: The role of cultural factors. *International Journal of Aging and Human Development*, 91(1), 21-36. <https://doi.org/10.1177/0091415019848211>
49. Rhee, M. K., Jang, Y., Kim, S. Y., & Chang, S. (2020). The moderating role of social factors in the relationship between the incident of fall and depressive symptoms: A study with a national sample of older adults in South Korea. *Aging and Mental Health*. Advance online publication, May 19, 2020. <https://doi.org/10.1080/13607863.2020.1758911>
50. Yoon, H. & Jang, Y. (2020). Willingness to seek professional mental

- health service in three ethnic groups of Asian Americans. *Journal of Ethnic and Cultural Diversity in SocialWork*. Advance online publication, October 30, 2020. <https://doi.org/10.1080/15313204.2019.1680589>
51. Yoon, H., **Jang, Y.**, Kim, S., Speasmaker, A., & Nam, I. (2020). Trends in internet use among older adults in the United States, 2011-2016. *Journal of Applied Gerontology*. Advance online publication, March 5, 2020. <https://doi.org/10.1177/0733464820908427>
52. Yoon, H., **Jang, Y.**, Vaughan, P. W., & Garcia, M. (2020). Older adults' internet use for healthinformation: Digital divide by race/ethnicity and socioeconomic status. *Journal of Applied Gerontology*, 39(1), 105-110. <https://doi.org/10.1177/0733464818770772.1.64>
53. Joosten-Hagye, D., **Katz, A.**, Sivers-Teixeira, T., & Yonshiro-Cho, J. (2020). Age-friendly student senior connection: students' experience in an interprofessional pilot program to combat loneliness and isolation among older adults during the COVID-19 pandemic. *Journal of Interprofessional Care*, 1-4. <https://doi.org/10.1080/13561820.2020.1822308>
54. **Katz, A.**, & Axonovitz, J. (2019). What It Takes to Combat Decline: Learning Through an Interprofessional Student Senior Partnership. *Innovation in Aging*, 3(Supplement\_1), S664-S665.
55. **Lincoln, K. D.** (2020). Race, obesity and mental health among older adults in the United States:A literature review. *Innovation in Aging*, 4(5), Article igaa031. <https://doi.org/10.1093/geroni/igaa031>
56. Lincoln, K. D. (forthcoming). Wake Up Everybody: Lifting the Veil from Diversity. In Finney & T. Fitzgerald (Eds.). *The Reality of Diversity, Gender, and Skin Color: From Living Room to Classroom*. Cognella Academic Publishing: San Diego, CA.
57. Nguyen, A.W., **Lincoln, K. D.**, Wang, F., & Qin, W. (2020). Negative interactions with extended family and church members and subjective well-being among older African American women. *Journal of Women & Aging*. Advance online publication, November15, 2020. <https://doi.org/10.1080/08952841.2020.1829938>

58. **Nair, M.** (2020). *Grand Challenges for Social Work and Society.*(Book review) Oxford University Press.
59. **Nair M.D., Collins E.M.** (2020) Centenarians: Life Style for a Long Healthy Life. In: Pitchumoni C., Dharmarajan T. (eds) *Geriatric Gastroenterology.* Springer, Cham.
60. **Evanson, O., & Wu, S.** (2020). Comparison of satisfaction with comorbid depression care models among low-income patients with diabetes. *Journal of Patient Experience, 7*(5),734-741.
61. **Guerrero, E., Alibrahim, A., D'Aunno, T., Howard, D., & Wu, S.** (2020). Stability in a large drugtreatment system: Examination the role of program size and performance on service discontinuation. *International Journal of Drug Policy, 86*, Article 102948.  
<https://doi.org/10.1016/j.drugpo.2020.102948>
62. **Jin, H., & Wu, S.** (2020). Text messaging as a screening tool for depression and related conditions in underserved, predominantly minority safety net primary care patients:Validity study. *Journal of Medical Internet Research, 22*(3), Article e17282.  
<https://doi.org/10.2196/17282>



---

## Presentations at Major Scientific Conferences: Society of Social Work and Research

---

1. Paper: The Association of Loneliness and Chronic Pain Among African-American, Latino and White Older Adults  
David Camacho, Denise Burnette, Maria P. Aranda, and Ellen Lukens
2. ePoster: Perceived Neighborhood and Mental Health of Older Asian Americans in Central Texas  
Yong Ju Cho, and Yuri Jang
3. ePoster: Factors Associated with Dental Service Use of Older Korean Americans  
Yuri Jang, Hyunwoo Yoon, Min-Kyoung Rhee, Nan Sook Park, and David Chiriboga,
4. ePoster: The Impact of Discriminatory Healthcare Experiences on Use of Medicaid-Funded Dental Care Services in California  
Yuri Jang, Min-Kyoung Rhee, Chung Hyeon Jeong, Woo Jung Lee, Haomiao Jin, and Ann-Marie Yamada
5. ePoster: Social Network Types, Living Alone, and Depressive Symptoms Among Older Korean Americans  
Nan Sook Park, Yuri Jang, David Chiriboga, and Soondool Chung
6. Paper: The Use of Complementary and Alternative Medicine and Unmet Healthcare Needs in Asian Americans  
Eun-Hye Grace Yi, and Yuri Jang
7. Poster: Geospatial and Environmental Predictors of Momentary Substance Use in a Sample of Young Adults Experiencing Homelessness  
Eldin Dzibur, Danielle Madden, Brian Redline, Sara Semborski, Harmony Rhoades, and Benjamin Henwood
8. Paper: End homelessness (Grand Challenge) SIG  
Benjamin Henwood (Moderator)



---

### Presentations at Major Scientific Conference: Alzheimer's Association International Conference

---

9. ePoster: Age-Friendly Initiative Needs Assessment Survey: Los Angeles City and County Employees. (2020)  
Iris Aguilar, Donald Lloyd, Laura Trejo and Maria P. Aranda
- 

### Presentations at Major Scientific Conference: Gerontological Society of America 2020

---

10. Li, T., Jiang, Y. & Chi, I. (November, 2020). A pilot study on the effect of a self-directed learning program on Asian American caregivers. Poster presentation at the 2020 Annual Scientific Meeting of Gerontological Society of America.
11. Wang, Y., Liu, M. & Chi, I. (November, 2020). An evaluation of self-care and caregiving training curriculum content for Chinese American immigrant caregivers: A co-design approach. Paper presentation at the 2020 Annual Scientific Meeting of Gerontological Society of America.
12. Mao, W., Wu, B., Chi, I., Yang, W., & Dong, X.Q. (Nov., 2020). Neighborhood cohesion, acculturation, and oral health problems among older Chinese American Immigrants. Paper to be presented online in the symposium entitled "Immigrant older adults: Is diversity a challenge for a global initiative?" Paper presentation at the 2020 Annual Scientific Meeting of Gerontological Society of America.
13. Mao, W., Wu, B., Chi, I., Yang, W., & Dong, X.Q. (Nov., 2020). Acculturation, neighborhood disorder, and subsequent oral health problems among foreign-born older Chinese Americans. Paper to be presented online in the symposium entitled "Social and behavioral factors, oral health, and dental care utilization". Paper presentation at the 2020 Annual Scientific Meeting of Gerontological Society of America.
14. Yu, K., Jiang, H., Liu, M., Wu, S., Jordan-Marsh, M., Chi, I. (October. 2020), Discerning Unmet Self-care Need and Co-design of a Mobile App with

- Chinese Immigrant Caregivers to Promote Self-Care. Oral Presentation at Gerontological Society of America Annual Scientific Virtual Meeting.
15. Jang, Y., Rhee, M. K., Jeong, C. H., Choi, E. Y., Park, J., & Park, N. S. (2020, November). Oral Health and Dental Care in Older Korean Immigrants in the United States: A Qualitative Study. Poster Presentation at the 2020 Gerontological Society of America (GSA) Virtual Annual Meeting.
  16. Kim, K., Jang, Y., Park, N. S., & Chiriboga, D. A. (2020, November). Acculturation and Healthcare Utilization among Older Korean Immigrants: A Dyadic Study of Married Couples. Symposium Presentation at the 2020 Gerontological Society of America (GSA) Virtual Annual Meeting.
  17. Park, N. S., Jang, Y., Chiriboga, D. A., & Chung, S. (2020, November). Correlates of Loneliness in Older Korean Americans: Interactive Effects of Negative Family Interactions. Symposium Presentation at the 2020 Gerontological Society of America (GSA) Virtual Annual Meeting.
  18. Cho, Y., Hai, A., & Jang, Y. (2020, November). Life Stressors, Social Capital, and Mental Distress in Multi-Ethnic Groups of Older Asian Americans. Symposium Presentation at the 2020 Gerontological Society of America (GSA) Virtual Annual Meeting.
  19. Bui, C. N., Kim, K., Song, Q., & Jang, Y. (2020, November). Together, We Can Make This Place Our Home: Civic Engagement Among Asian Immigrants. Poster Presentation at the 2020 Gerontological Society of America (GSA) Virtual Annual Meeting.
  20. Chiriboga, D. A., Park, N. S., Jang, Y., Molinari, V. A., & Aluysi, A. (2020, November). Change over Time in Linguistic Acculturation: A Comparison between Cuban and Non-Cuban Hispanic Immigrants. Poster Presentation at the 2020 Gerontological Society of America (GSA) Virtual Annual Meeting.
  21. Yu, K., Jiang, H., Liu, M., **Wu, S.**, Jordan-Marsh M., & Chi, I. (2020, November). Discerning unmet self-care need and co-design of a mobile app with Chinese immigrant caregivers to promote self-care. Gerontological Society of America 2020 Annual Meeting, Online.
  22. Yu, K., Wu, S. & Chi, I. (October, 2020). A assessing feasibility of implementing a type 2 diabetes mHealth program in affordable senior housing. Paper presented at American Public Health Association Annual Virtual Meeting and Expo.

23. Yu, K., Wu, S., Chi, I. (October, 2020), Longitudinal assessment of geriatric conditions and loneliness. Paper presentation at American Public Health Association Annual Virtual Meeting and Expo.
24. Yu, K., Wu, S., Liu, R., Chi, I. (October, 2020), Mobile Technology Adoption for Type 2 Diabetes Management among Chinese and Hispanic Immigrants: A qualitative pilot study. Oral presentation at American Public Health Association Annual Virtual Meeting and Expo.
25. Liu, W., Kwan, CW & Chi, I. (February, 2020). Shared care arrangement of older adults with stroke. Paper presented at interRAI World Conference, Leuven, Belgium.
26. Jang, Y. (2020, November). *Alzheimer's Disease and Related Dementia (ADRD) in Asian American Communities*. Symposium at the USC Integrative Health and Wellness Conference.
27. Jang, Y. (2020, May). *Racial/ethnic Disparities: Beyond the Role of Socioeconomic Status*. Invited Talk, Committee on Population, The National Academies of Sciences, Engineering, and Medicine.

---

### Other Presentations at Scientific Conferences

---

28. Wu, S. (2020, November). Session chair and moderator. *Health Applications to Inform Public Policy*. Panel session at the INFORMS Annual Meeting & Expo, Virtual.
29. Wu, S. (2020, October). Symposium chair. *Employing Mobile Health to Address Disparities in Diabetes Self-care among Middle-aged to Older Immigrants and Low-income Seniors in Affordable Housing*. Symposia at the American Public Health Association Annual Meeting & Expo, Virtual.
30. Wu, S., Yu, K., & Chi, I. (2020, October). Assessing feasibility of implementing a type 2 diabetes mHealth program in affordable senior housing. American Public Health Association Annual Meeting & Expo, Virtual.
31. Yu, K., Chi, I., & Wu, S. (2020, October). How does the environments in affordable senior housing influencing type 2 diabetes management? Perspectives from stakeholders. American Public Health Association Annual Meeting & Expo, Virtual.

32. Yu, K., Wu, S., Liu, R., & Chi, I. (2020, October). Mobile technology adoption for type 2 diabetes management among Chinese and Hispanic immigrants: A Qualitative Pilot Study. American Public Health Association Annual Meeting & Expo, Virtual.
33. Liu, R., Wu, S., Yu, K., & Chi, I. (2020, October). Self-care experience among middle-aged to older Chinese and Hispanic immigrants with type 2 diabetes in Los Angeles. American Public Health Association Annual Meeting & Expo, Virtual.
34. Yu, K., Wu, S., & Chi, I. (2020, October). Longitudinal assessment of geriatric conditions and loneliness. American Public Health Association Annual Meeting & Expo, Virtual.

